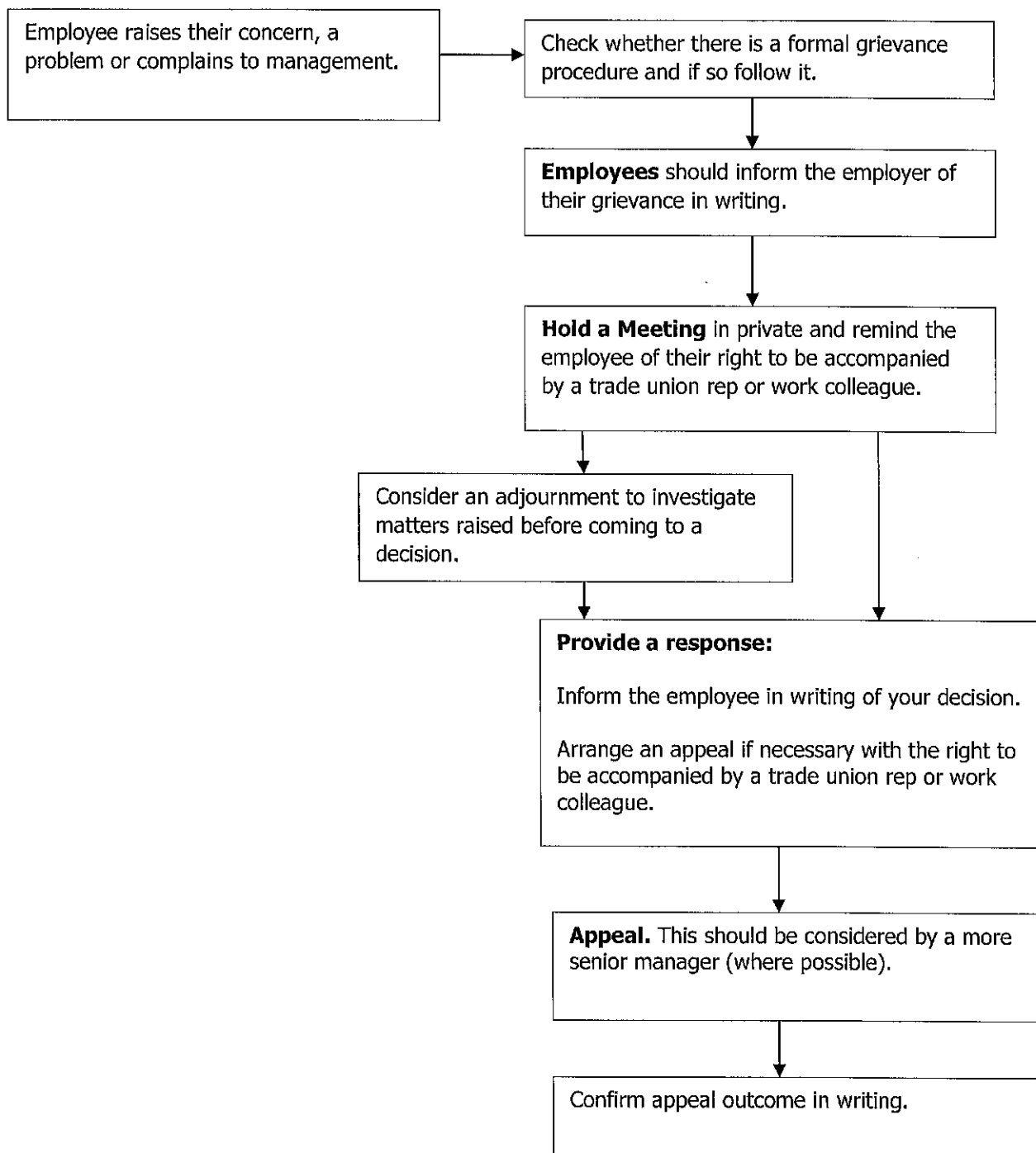




## The Grievance Process

An informal approach between employee and line manager is often the best way to proceed. If this is not possible



This advice is general in nature and will need to be tailored to any one particular situation. As an RMI member you have access to the RMI Legal advice line, as well as a number of industry experts for your assistance. Should you find yourself in the situation above, contact us on 0845 305 42 30 at any stage for advice and assistance.